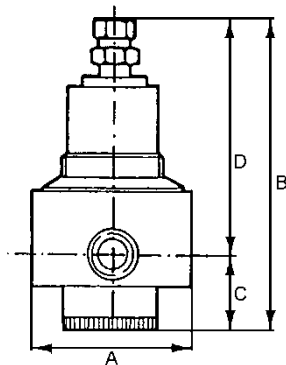
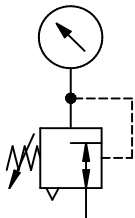


Stainless steel regulators for use in the chemical industry, mining, plant construction and special machinery industries, pneumatics, etc.
Pressure setting by T-handle.

Max. input pressure	30 bar
Max. medium temperature	80 °C
Max. ambient temperature	80 °C
Housing	Stainless steel casting 1.4401 (AISI 316)
Sealant	NBR
Diaphragms	NBR/PTFE
Flow rate measurement	At $P_1 = 10$ bar, $P_2 = 6$ bar and pressure drop $\Delta p \leq 1$ bar

Reversible, stainless steel pressure regulator with self-relieving design and stainless steel pressure gauge

Art. No.	Type No.	Thread	Control range bar	Flow rate l/min	A mm	B mm	C mm	D mm
137323	580RC1-14-4	G 1/4	0.4 - 4	2125	62.0	166.0	51.0	115.0
137324	580RC1-14-17	G 1/4	1.7 - 17.5	2125	62.0	166.0	51.0	115.0
137325	580RC1-38-4	G 3/8	0.4 - 4	3965	62.0	166.0	51.0	115.0
137326	580RC1-38-17	G 3/8	1.7 - 17.5	3965	62.0	166.0	51.0	115.0
137327	580RC3-12-4	G 1/2	0.4 - 4	8070	82.0	170.0	49.0	121.0
137328	580RC3-12-17	G 1/2	1.7 - 17.5	8070	82.0	170.0	49.0	121.0
137329	580RC3-34-4	G 3/4	0.4 - 4	9260	82.0	170.0	49.0	121.0
137330	580RC3-34-17	G 3/4	1.7 - 17.5	9260	82.0	170.0	49.0	121.0
137331	580RC4-1-4	G 1	0.4 - 4	10790	120.0	224.0	88.0	136.0
137332	580RC4-1-17	G 1	1.7 - 17.5	10790	120.0	224.0	88.0	136.0
137333	580RC4-112-4	G 1 1/2	0.4 - 4	11270	120.0	224.0	88.0	136.0
137334	580RC4-112-17	G 1 1/2	1.7 - 17.5	11270	120.0	224.0	88.0	136.0



580RC3-12-4

Accessories / spare parts for stainless steel pressure regulator G 1/4 and G 3/8 (Size 1)

Art. No.	Type No.	Description
102510	4083	Pressure gauge Ø 63 mm, G 1/4 ET, 0 - 6 bar
102511	4086	Pressure gauge Ø 63 mm, G 1/4 ET, 0 - 25 bar
137316	580RC1-VS	Set of wearing parts
137113	580RM-BW	Mounting bracket

Accessories / spare parts for stainless steel pressure regulator G 1/2 and G 3/4 (Size 3)

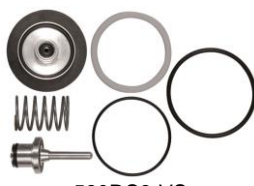
Art. No.	Type No.	Description
102510	4083	Pressure gauge Ø 63 mm, G 1/4 ET, 0 - 6 bar
102511	4086	Pressure gauge Ø 63 mm, G 1/4 ET, 0 - 25 bar
137317	580RC3-VS	Set of wearing parts
137113	580RM-BW	Mounting bracket

Accessories / spare parts for stainless steel pressure regulator G 1 and G 1 1/2 (Size 4)

Art. No.	Type No.	Description
102510	4083	Pressure gauge Ø 63 mm, G 1/4 ET, 0 - 6 bar
102511	4086	Pressure gauge Ø 63 mm, G 1/4 ET, 0 - 25 bar
137318	580RC4-VS	Set of wearing parts
137113	580RM-BW	Mounting bracket



4086



580RC3-VS



580RM-BW